

Packaging Options, Article # and Description



Fracfinder Blue

968 001 Fracfinder Blue,
bag of 1

968 002 Fracfinder Blue,
bag of 2



Fracfinder Colors

968 040 Fracfinder White,
4 per bag

968 041 Fracfinder Green,
4 per bag

968 042 Fracfinder Pastel Blue,
4 per bag

968 043 Fracfinder Pink,
4 per bag

968 044 Fracfinder Purple,
4 per bag

968 045 Fracfinder Assorted,
5 per bag

Fracfinder Blue and Colors are Trademarks of Denbur, Inc.

Patented 

Manufactured by Denbur, Inc. ©3-07

Made in USA

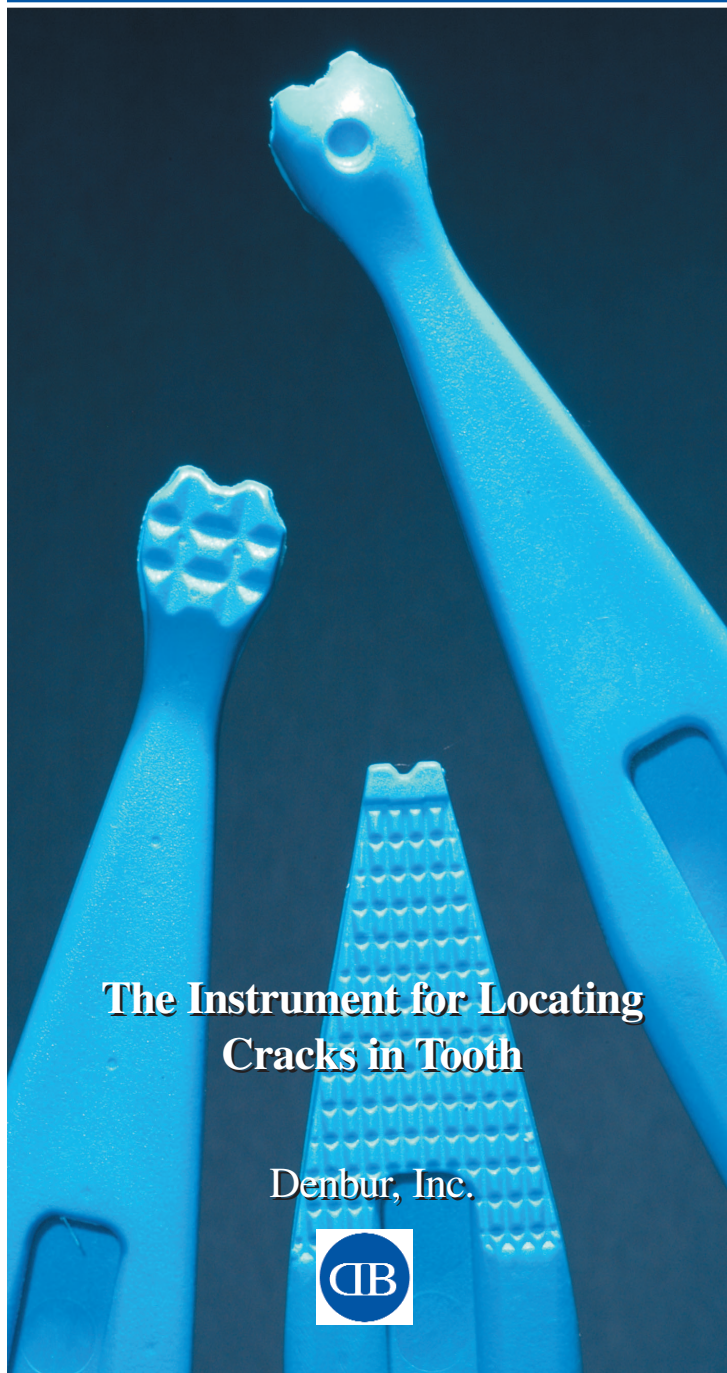
Denbur, Inc.

P.O. Box 3473, Oak Brook, Illinois 60522-3473 USA
630-986-9667 • 800-992-1399 • fax: 630-986-9688

E-mail: denbur@denbur.com

www.denbur.com

Fracfinder™ for *Finding Tooth Fracture*



The Instrument for Locating Cracks in Tooth

Denbur, Inc.



Fracfinder

Cracked tooth is a syndrome familiar to most dental professionals. The development of cracks is a common complication in restored posterior tooth. Usually, the crack originates in the deepest part of the occlusal box and runs diagonally out under a cusp. The signs and symptoms of a cracked tooth include sensitivity to temperature changes, to sugar, or tenderness on biting.

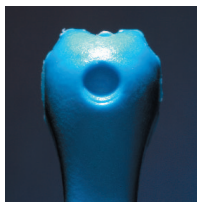
Generally, a cracked tooth cannot be detected clinically or radiographically. Therefore, it can be difficult to diagnose or to localize the tooth or cusp. Dentists have used various implements to locating a cracked cusp. These, among other things, include cotton rolls, wood sticks and metal instruments. All of these implements have limitations.

Fracfinder is an indispensable instrument for the practice of modern dentistry. It is an instrument that simplifies locating cracks in tooth. Locating cracks with Fracfinder is quick and precise. To locate the crack, place the small indentation of the Fracfinder on suspected cusp. Ask the patient to apply pressure while gently biting on the suspected cusp(s). Fracfinder provides force when the patient bites down on the instrument. Cracked cusp is then located easily, rapidly and precisely.

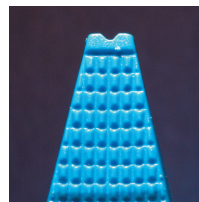
Fracfinder can also be used for applications such as seating crowns, fixed prosthesis, and tapping on teeth.

Fracfinder Blue is a sturdy instrument made of a rigid autoclavable material. Fracfinder Blue will provide years of usage without getting chewed up. Eventually, after years of usage and autoclaving, it may discolor. It is a long lasting instrument.

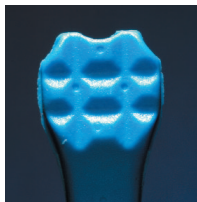
Fracfinder Colors are available in color **green, pastel blue, pink, purple** and **white**. Fracfinder Colors are made of a soft autoclavable material. In time they may get chewed up and are not as long lasting as Fracfinder Blue.



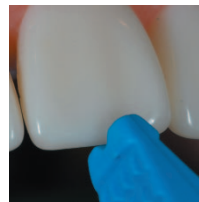
- Small indentation on the Fracfinder is to be placed on the suspected cusp.



- The opposite end of Fracfinder features a small indentation.



- The opposite side of the indentation is grooved for better control on the cusp.



- Utilizing indentation to seat a crown.



- Placing Fracfinder on the suspected cusp.

